

# PUNCH Public Engagement Monthly Newsletter Issue 11: Sept 2023

Shining New Light on Diverse Views of the Sun  
with our Ancient & Modern Sun-Watching Theme



## Did You Know....

...that the Earth's magnetic field protects us from the particle emissions of the solar wind and from solar storms called Coronal Mass Ejections (CMEs) that increase the speed and turbulence of the everpresent solar wind. When these particles interact with our magnetic field, they create beautiful auroras, also known as the Northern and Southern Lights (seen from space in the image below). Auroral lights are also more likely to be seen from the ground now that the Sun is entering a period of greater activity called [Solar Maximum](#).



Image credit: NASA

## Decadal White Paper Published

The [Bulletin of the AAS](#) recently published a [Solar & Space Physics Decadal](#) White Paper authored by [PUNCH Outreach](#) Director, Dr. Cherilynn Morrow, with Principal Investigator, Dr. Craig DeForest, Outreach Evaluator, Dr. Sanlyn Buxner, and Project Scientist, Dr. Sarah Gibson. The paper titled, "[Support for a New and Improved Approach for NASA Mission-Embedded Outreach](#)," proposes an *optional* approach to NASA mission-embedded outreach and offers PUNCH as an example for leveraging a NASA mission to help stimulate a greater diversity of young people to consider solar and space physics as a career.

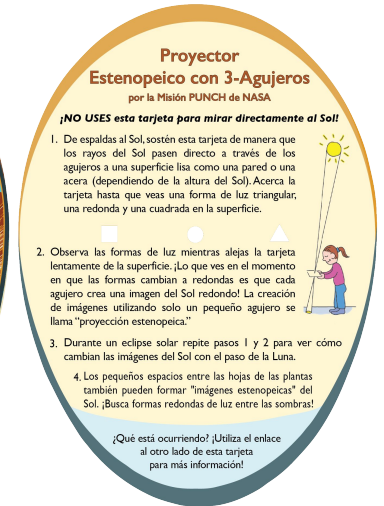
## PUNCH Outreach Supports Multiple Events in NM

The [New Mexico Museum of Natural History and Science](#), a core institution in the [PUNCH Outreach](#) Collaborative has been busy preparing for the annular eclipse that will cross over Albuquerque, NM, on October 14th, 2023. This includes leading and disseminating PUNCH Outreach products to a [coalition of 22 partner organizations](#) including NASA, NOAA, Art/Science Museums, National, State, City Parks and others.

Visit [punch.space.swri.edu](http://punch.space.swri.edu) for more about the **NASA PUNCH** mission and its [Outreach program](#). **For questions or photo submissions:** Outreach Deputy Program Manager ([jtrump@slco.org](mailto:jtrump@slco.org)) & Outreach Director ([cherilynn.morrow@gmail.com](mailto:cherilynn.morrow@gmail.com)). [View the Newsletter Archive](#).

## Novel Outreach Products to Support Eclipse Events!

We are excited to release the Spanish language translation of our [3-Hole PUNCH Pinhole Projector](#). Printing instructions and a new [6-min "how to" video](#) are also available along with many [other valuable products to support your eclipse events](#).



## Your Solar Photo of the Month

Every month we feature a photo [submitted by readers](#) that portrays a personal experience of the Sun.



Photo by Derek Wallentinsen

*"This is the shadow of my fist during mid-annular-eclipse on May 20th, 2012. The multiple rings are pinhole images of the Sun projected by tiny spaces between my fingers and knuckles. Pinhole images are the safest and easiest way to view the Sun." - Derek Wallentinsen, [Eclipse Ambassador](#)*  
Try this, along with [Waffle Fingers](#), and our [3-Hole PUNCH Pinhole Projector](#) during the [eclipse on October 14th 2023](#).